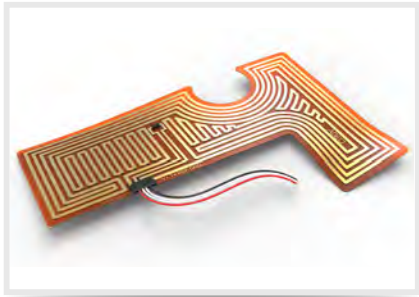


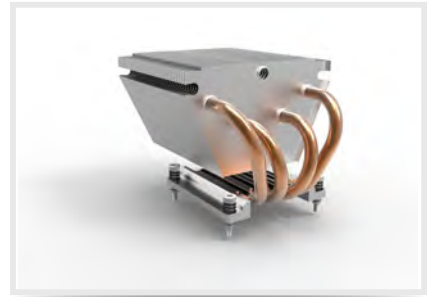
AD2EO HEATPIPE LTD



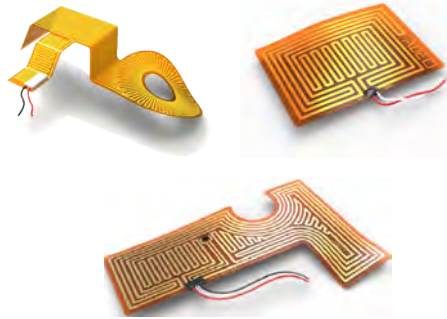
Heater Foil



Heatpipe

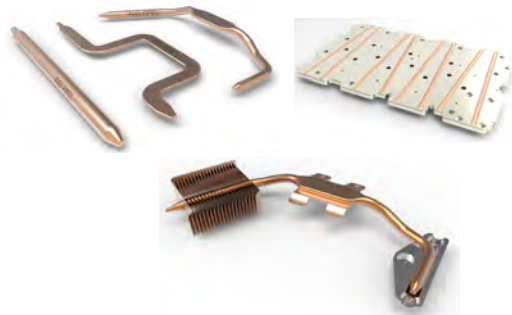


Cooling Assembly



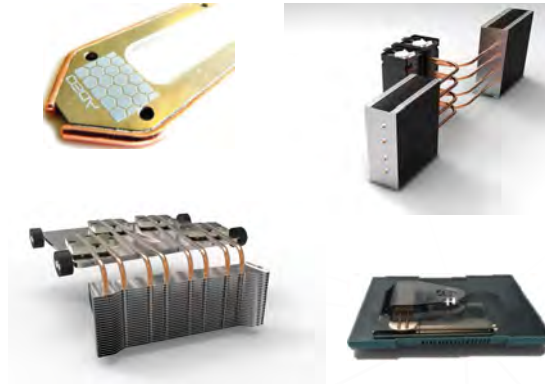
Heater Foil

Type	Kapton, Silicone, Mica
Layout	Standard or Customized
Mounting	Acrylic PSA, clamped
Temp. Range	-200° to +600°C



Heatpipe

Wick/Sort	Sintered, Mesh, Siphon
Temp.	Low & High temp
Shape	Standard and Customized
Special	Heatsreader, Assembly



Special Request

Test Assembly	Heatpipe Performance Customized, shape, bending, surface treatment
---------------	--



Tooling

Moulding	DieCast Alu, Magnesium Plastic, Rubber
Bending	Aluminum, Steel

DISTRIBUTOR: